

Motion Tracking System

Philips Achieva/Ingenia



TracInnovations' markerless motion tracking system is compatible with

PHILIPS
Healthcare



Philips Achieva 3T



Philips Ingenia Elition 3T *



- configured with the *Philips dStream Head 32ch* head coil

*Tracoline compatibility under development

Prospective and Retrospective motion correction patches available for

- ✓ High-precision motion tracking with superior time resolution
- ✓ Prospective motion correction (angulation and off-center) of each acquisition profile
- ✓ Wide range of brain imaging sequences (2D/3D, DTI, fMRI)
- ✓ Precise temporal synchronization for reconstruction with retrospective motion correction

(for research only)

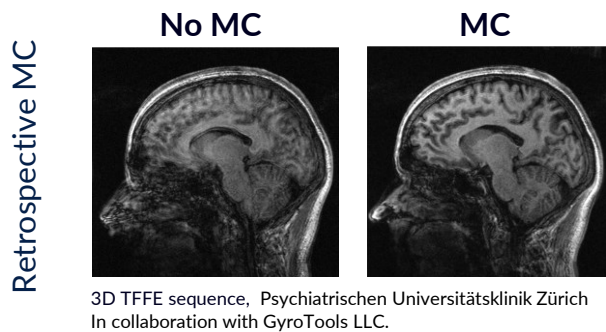
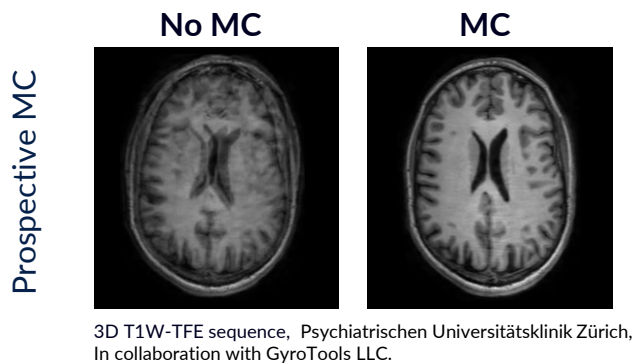
Tracoline and TracSuite are the ideal tools for

- ✓ Motion tracking
- ✓ Prospective and Retrospective motion correction



Motion correction (for research only)

TracInnovations' motion tracking system has been successfully demonstrated for Prospective and Retrospective motion correction (MC) on 3T MRI scanners from Philips



Motion correction patch features

- ✓ No alteration of sequence timing
- ✓ Compatible with wide range of brain imaging sequences
- ✓ Easy setup, single additional exam parameter: MC On/Off

Additional for Retrospective MC

- ✓ Side-by-side comparison of original un-corrected and corrected images

in collaboration with **gyrotools**.
SOLUTIONS FOR RESEARCH

TracInnovations presents a unique solution that potentially provides



Better diagnosis and treatments
Improved images and no need for sedation



Lower cost
Fewer rescans and shorter scan times



Simple and automated workflow
No added scan time and no patient preparation